

Week 5



HB 261/461 - Sem 2, 2009

A Integrative Framework for Therapy


A work in progress by Peter Janetzki based on *Christian Wholeness Counselling* by Dr John (2005) Warlow and *Constructing the Sexual Crucible* by Dr David Schnarch (1991)



HB 261/461 - Sem 2, 2009


Counselling as a Process

As understood by John Warlow -
Christian Wholeness Counselling Services



HB 261/461 - Sem 2, 2009

The Christian Wholeness Approach
Dr John Warlow



HB 261/461 - Sem 2, 2009

Schnarch states that the best counselling involves Isomorphic Intervention

Schnarch - Two Day Sexual Crucible® Workshop Australia 2002


- Simultaneously congruent layers
- Therefore working on multiple dimensions
- Working on one dimension leads to 'snare trap' therapy
- That is manoeuvring people to where I want them or need them so that my counselling works.



HB 261/461 - Sem 2, 2009

The Christian Wholeness framework - by Dr John Warlow

Dr John Warlow uses five concentric circles (which include a number of sectors - not shown) as a framework for understand people




HB 261/461 - Sem 2, 2009

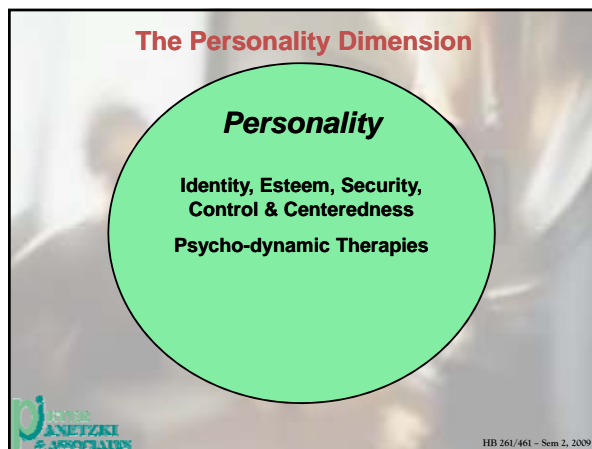
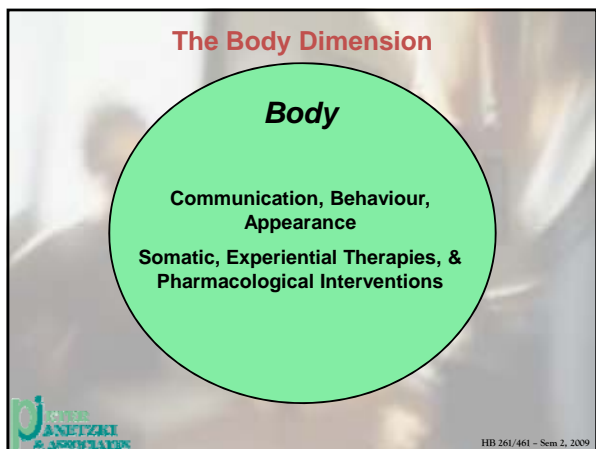
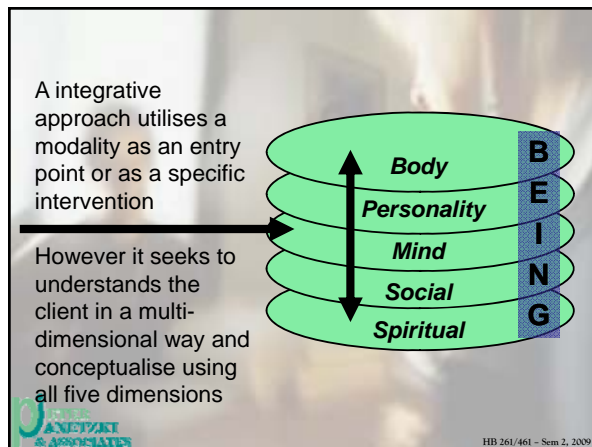
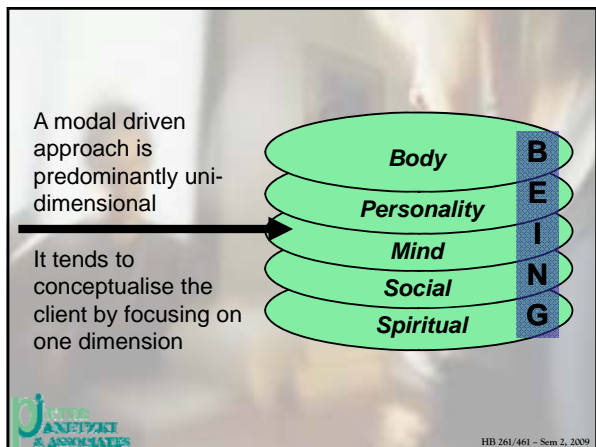
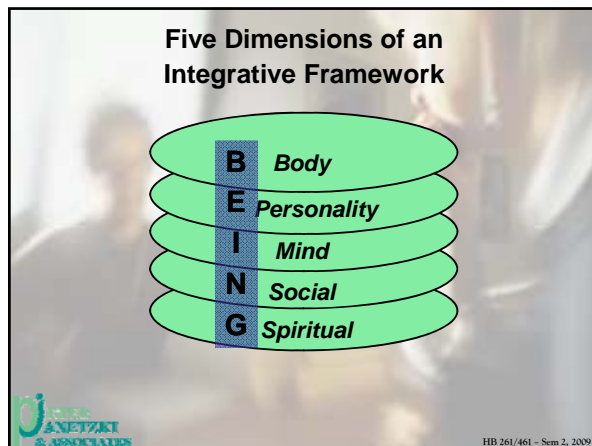
Combining the concepts of Warlow and Schnarch provides a framework consisting of five dimensions of understanding people.

No one dimension of the person is discrete and separate, all are interdependent and interrelated (isomorphic).

The skilled therapists utilises an integrative framework (multi-dimensional) for constructing their picture, rather than a framework that is modal driven (predominantly uni-dimensional).



HB 261/461 - Sem 2, 2009




The Mind Dimension

Mind

Perception, Thinking, Memory,
Mood & Volition

Cognitive and Behavioural
Therapies, Pharmacological
Interventions




HB 261/461 - Sem 2, 2009

The Social Dimension

Social

Systemic and Family of Origin,
Social Constructivism

Systems Theory, Narrative &
Brief Therapies



HB 261/461 - Sem 2, 2009


The Spiritual Dimension

Spiritual


Our understanding of people as
Spiritual beings and our quest for
ultimate meaning and purpose.

Theological Framework of Client
and Counsellor


Transpersonal Therapy &
Specific Spiritual Interventions



HB 261/461 - Sem 2, 2009



1. A key issue is how do the people I minister too see me?
2. Clarifying which role I am in (what hat I am wearing) in a given situation
3. Being clear about how I see myself – my self-worth does not come from what I DO but WHO I AM



HB 261/461 - Sem 2, 2009


Transference & Counter-Transference

Unmet needs / Unresolved issues

for the client hungry for love, wouldn't it be nice to find someone who was educated, mannerly, articulate but also a good listener, respected in the community, occupationally powerful, yet unselfish and willing to spend time alone for free

(Hart Gulbranson, L.G. & Smith 1992)

Past
Present



HB 261/461 - Sem 2, 2009

